

The 9128 Alerting Call Display is a compact desktop display for use with Tone Commander 9130 and 9140 9-1-1 Call Locators. This unit displays 9-1-1 call activity and provides an audible alarm to alert the user when a new call message arrives.

Users can scroll through the last 20 messages received. The alarm volume is adjustable.

Alerting Call Displays can be connected directly to the 9130/9140, or connected over an Ethernet network through an NDS/1181 Port Server (available separately).

A desktop stand, power supply, and required cables and adapters are included with the 9128.



Specifications

Power Requirements	120 VAC, 60 Hz, single phase, 120 mA maximum (uses included 20 VAC, 300 mA wall power supply)
Call Memory	20 messages (cleared when power is disconnected)
Display	LCD, 2 lines, 40 characters per line
Physical Dimensions	4" H x 7.5" W x 1.2" D, without desktop stand
Weight	13 oz.; 1 lb. with desktop stand
Operating Temperature	32° - 104° F (0° - 40° C)
Humidity	5% to 95%, non-condensing

Contents of Shipping Box

(1) 9128 Alerting Call Display	(1) 2917 adapter for direct connection
(1) Desktop stand	(1) 2918 adapter for LAN connection with NDS/1181 port server
(2) Pairs of Velcro strips	(1) 150102 'T' adapter
(1) Wall power supply	(1) Installation Instructions (this document)

Mounting

1. Remove the backing sheets from the cloth Velcro strips, and apply the strips to the desktop stand as shown in Figure 1.
2. Attach the hook Velcro strips to the strips on the desktop stand, then remove the backing sheets.
3. Press the 9128 onto the exposed adhesive strips on the desktop stand.

Tone Commander 9128 Alerting Call Display Installation Instructions

Connections

Direct Connection to 9130 or 9140

Refer to Figure 1.

1. Run a cable from the wall jack to the 9130/9140 location. Only a single pair is required, connected to pins 3 and 4 on the wall jack (center pair). Terminate the cable at the 9130/9140 end with a 6-wide modular plug.

Multiple 9128 units can be directly connected; refer to the Installation – Reporting Devices section in the [9130](#) or [9140 Installation Instructions](#).

The total cable length from the 9130/9140 to the 9128 must not exceed 1000 feet.

2. Attach the supplied 2917 adapter to the 9130/9140 Auxiliary connector.
3. Plug the cable into the 2917 adapter.
4. Plug the 150102 'T' adapter into the wall jack.
5. Connect the 9128 to the 'T' adapter using the supplied 6-conductor modular line cord. If you need to use a longer line cord, make sure that it is a 6-conductor cord with 6-wide plugs (many commonly available line cords have only 2 or 4 conductors). The 9128 is powered over pins 1 and 6 (outside pair).
6. Connect the power supply cord to the 'T' adapter.
7. Plug the power supply into a standard 120 VAC power outlet.
8. Press the ALERT button to stop the audible alarm.

LAN Connection

Refer to Figure 2.

An NDS/1181 port server is required for connecting the 9128 to a network. The port server can be located near the 9128 (local), or in the equipment room (remote).

1. Plug the 2918 adapter into the 9-pin connector on the port server.
2. Connect the port server to the LAN using a Category 3 or better unshielded twisted pair cable.
3. Install the supplied NativeCom software and configure the port server; refer to the Installation – Reporting Devices section in the [9130](#) or [9140 Installation Instructions](#).
4. *Local port server:* Plug the 150102 'T' adapter into the 2918 adapter.
Remote port server: Install a 6-wide modular wall jack at the 9128 location. Connect a cable to the wall jack; only a single pair is required, connected to pins 3 and 4 (center pair). Terminate the cable at the port server end with a 6-wide modular plug, and plug it into the 2918 adapter. Plug the 150102 'T' adapter into the wall jack.
5. Connect the 9128 to the 'T' adapter using the supplied 6-conductor modular line cord. If you need to use a longer line cord, make sure that it is a 6-conductor cord with 6-wide plugs (many commonly available line cords have only 2 or 4 conductors). The 9128 is powered over pins 1 and 6 (outside pair).
6. Connect the power supply cord to the 'T' adapter.
7. Plug the power supply into a standard 120 VAC power outlet.
8. Press the ALERT button to stop the audible alarm.

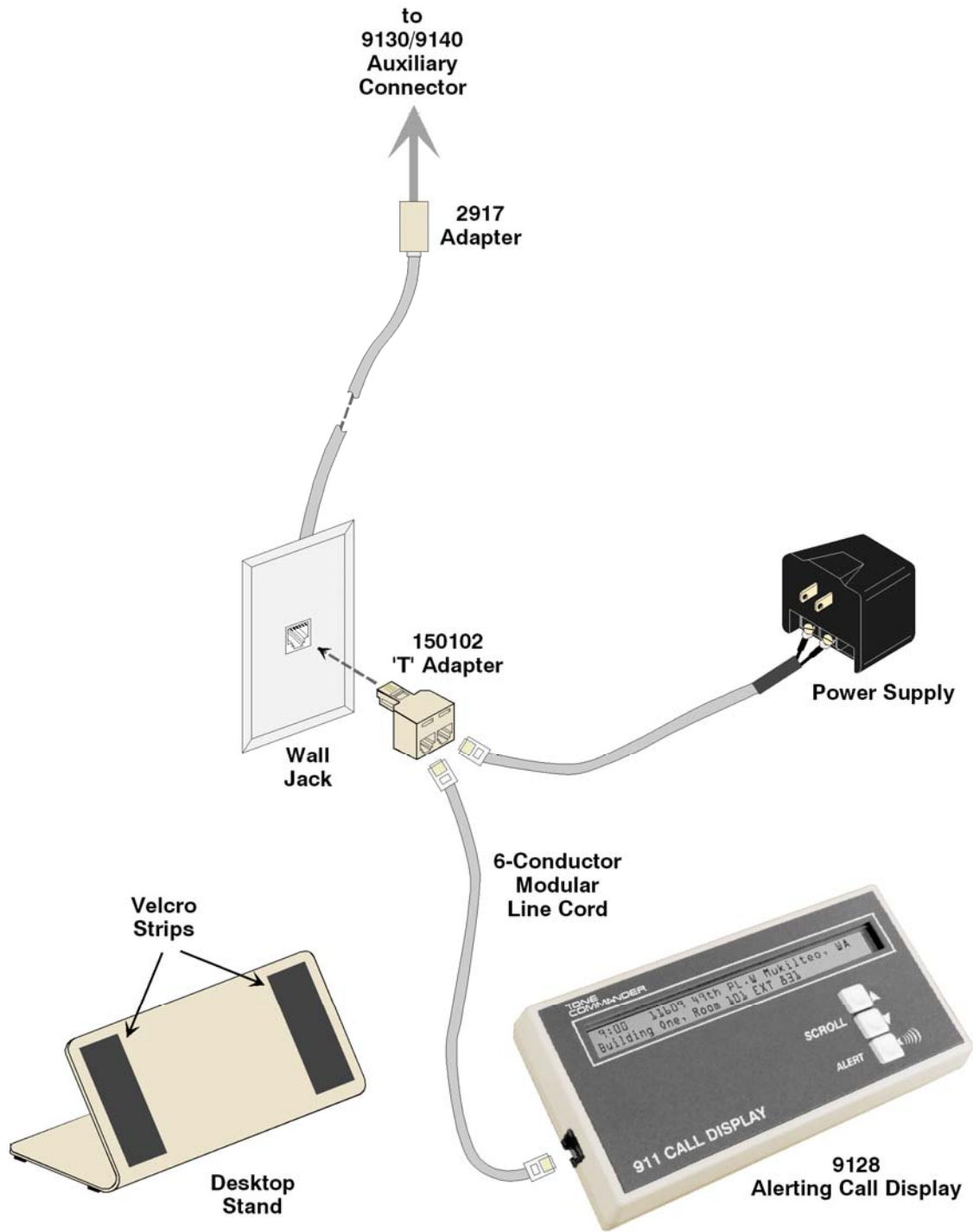


Figure 1 – Direct Connection to 9130/9140

Tone Commander 9128 Alerting Call Display Installation Instructions

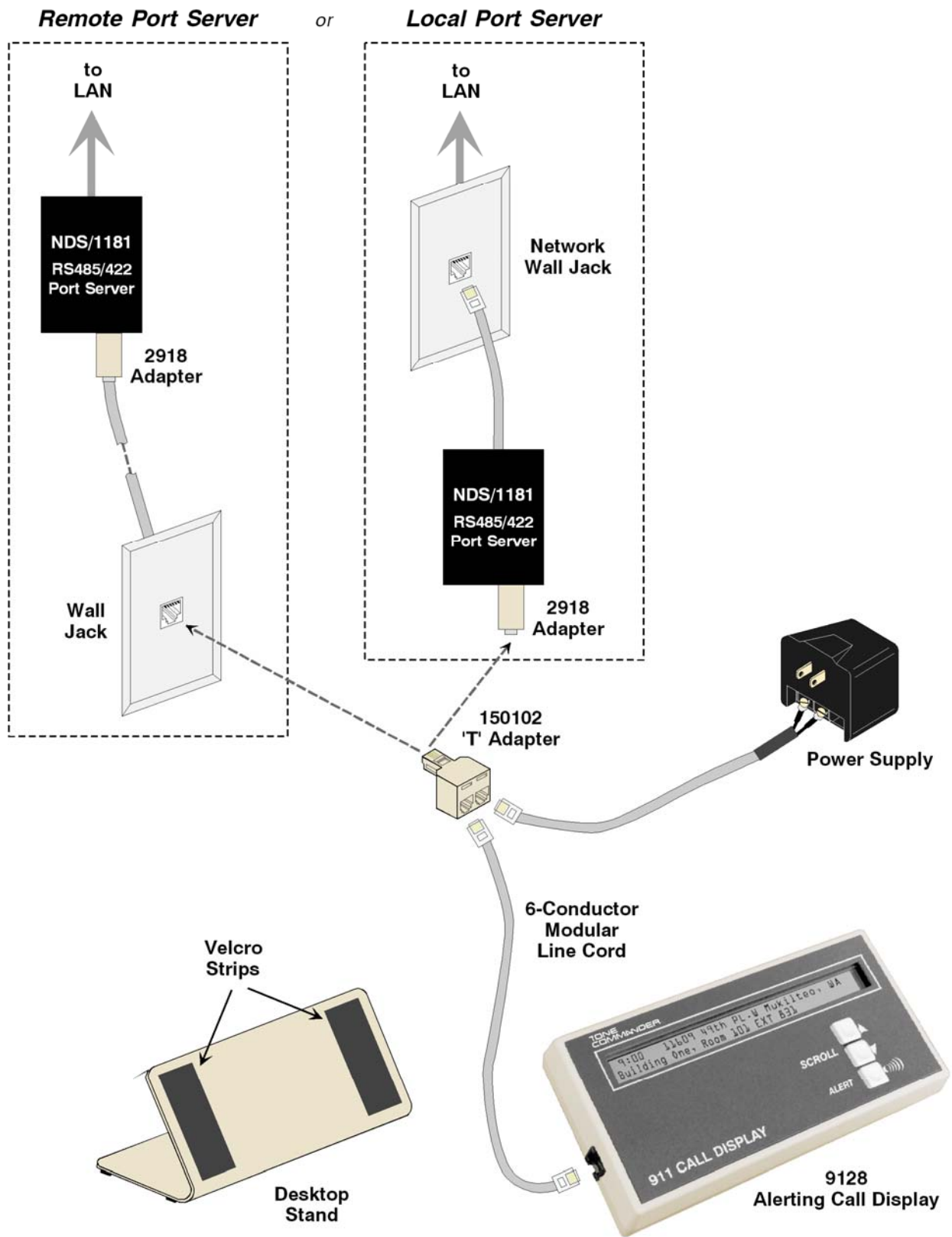


Figure 2 – LAN Connections

Operation

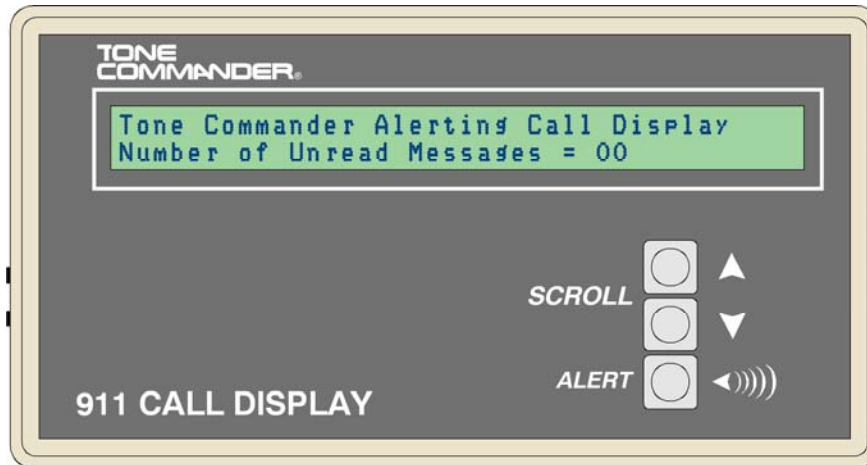


Figure 3 – 9128 Front Panel with Default Message

The default message shown in Figure 3 is displayed when communication with the 9130/9140 is detected by the 9128.

Viewing New Messages

The alerting tone sounds when a new message arrives.

Press the **ALERT** button to silence the alerting tone and display the message. Displayed call information includes:

- Time of the call
- Station Location Information as programmed into the 9130/9140

The message is displayed for 15 seconds, then the display reverts to the default message.

Viewing Previous Messages

Up to 20 messages are stored in the 9128 memory while power is applied.

Press the **SCROLL**▼ to view the previous call, or **SCROLL**▲ to display the next call.

Each message is displayed for 15 seconds, then the display reverts to the default message.

Alerting Tone Volume

Two alerting tone volume levels are available. The alerting tone can also be muted. The 9128 reverts to the highest level upon power-up.

Press the **SCROLL**▲ and **ALERT** buttons simultaneously for 4 seconds to set the alerting tone volume to the higher level.

Press the **SCROLL**▼ and **ALERT** buttons simultaneously for 4 seconds to set the alerting tone volume to the lower level.

To mute the alerting tone, press the **SCROLL**▼ and **ALERT** buttons simultaneously for 13 seconds.

Error Alert

If a communication error occurs, the alerting tone sounds and an error message is displayed. Check wiring and port server configuration.

Press the **ALERT** button to silence the alerting tone.

Tone Commander 9128 Alerting Call Display Installation Instructions

FCC Requirements

This equipment has been tested and found to comply with the limits for a Class A digital device, pursuant to Part 15 of the FCC Rules. These limits are designed to provide reasonable protection against harmful interference when the equipment is operated in a commercial environment. This equipment generates, uses, and can radiate radio frequency energy and, if not installed and used in accordance with the instruction manual, may cause harmful interference to radio communications. Operation of this equipment in a residential area is likely to cause harmful interference in which case the user will be required to correct the interference at their own expense.

Service

Repair of the 9128 Alerting Call Display must be done by Tone Commander. Prior to equipment removal, call Tone Commander Customer Technical Support for assistance in determining the source of the problem. This critical action can often prevent needless removal of equipment and subsequent customer inconvenience.

Tone Commander
Customer Technical Support Department
11609 49th Place West
Mukilteo, WA 98275-4255 USA

Phone: (425) 349-1000
(800) 524-0024

Fax: (425) 349-1010

E-mail: tech@tonecommander.com

Web: www.tonecommander.com

Tone Commander is committed to meeting the product needs of our customers. Please write or call us with any suggestions for improvement.

Tone Commander Product Warranty

For a period of one year from date of end user purchase, but not to exceed 16 months from date of manufacture, Tone Commander Systems, Inc. (Tone Commander) warrants its products to be free from defects in material and workmanship under conditions of normal use and service. Tone Commander shall, at its option, repair or replace any defective product which, in its opinion, has not been misused, damaged, or improperly installed. Extension periods of this warranty for certain products may be available for purchase upon request.

Repair or replacement under this warranty will be performed at Tone Commander's factory. Authorization must be obtained from Tone Commander prior to returning a product for repair. Freight must be prepaid for all units returned to Tone Commander. Units repaired under warranty will be shipped UPS Ground (or equivalent), freight prepaid by Tone Commander.

Products that are older than the warranty period, but less than 7 years old, or still manufactured by Tone Commander may be repaired at the factory for a flat rate charge. Repaired out-of-warranty units are warranted for 90 days from the date of repair.

The repair or replacement of a product under this warranty represents the entire obligation of Tone Commander; Tone Commander shall not be liable for any special or consequential damages resulting from or caused by any defect, failure, incapacity or malfunction of any of its products.

The foregoing express warranty is in lieu of all other warranties, express or implied, including, but not limited to any implied warranty of merchantability, fitness, or adequacy for any purpose or use, quality, productiveness or capacity; Tone Commander, to the extent permitted by law, hereby disclaims all such other warranties.