

The TSPI driver allows a Tone Commander 7210, 7220, 7310, or 7320 VoIP telephone to be controlled by a TAPI-compliant Windows computer application program.

System Requirements

Operating System: Microsoft Windows XP, 2000, 98

TSPI Driver Installation

If a previous version of the Tone Commander TSPI driver is installed, use the **Phone and Modem Options** or **Telephony** Control Panel to remove it, then restart your computer before proceeding.

1. Double-click the **TSPI_VoIP_XXXXXX.EXE** program.
2. Click the "I agree" button when the software license agreement is displayed. The TSPI files will be copied to your computer.
3. From the Start Menu, select **Settings - Control Panel**.

Telephone – Computer Network Connection

1. Connect the computer's network interface to the phone's **PC** connector using a standard 10/100 BaseT cable.

TSPI Driver Configuration

1. 7310/7320: While the phone is idle, select TAPI. (**Setup** → ADMIN → **More** → TAPI) from the Administration Options menu.

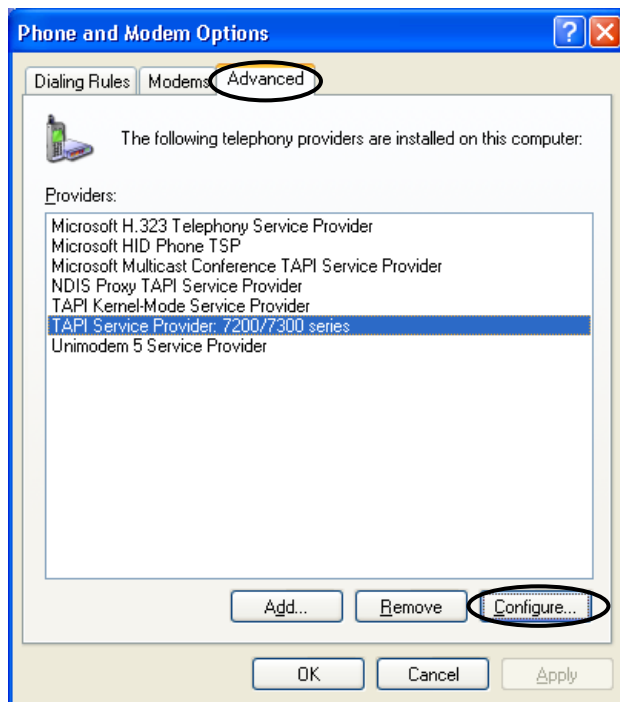
```
ADMINISTRATION OPTIONS →  
RESTART LOG TAPI
```



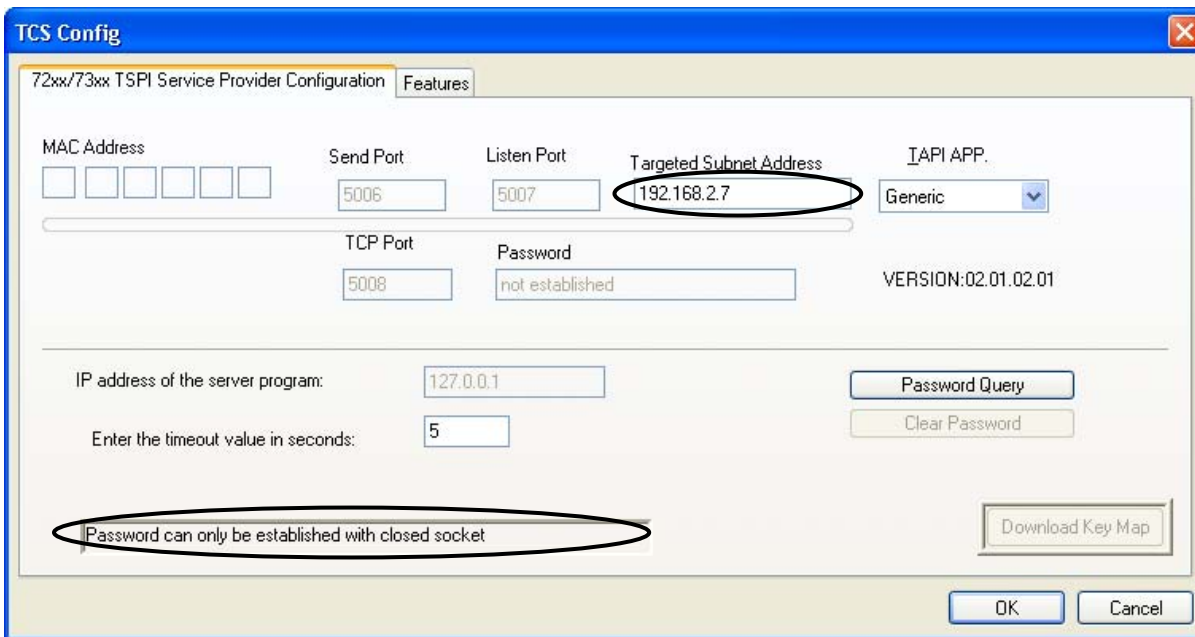
```
RUN PASSWORD QUERY ON PC  
IN TAPI CONTROL PANEL...
```

1. 7210/7220: While the phone is idle, disconnect the phone from the network. Leave the cable to the PC plugged in.

2. From the Start Menu, select Settings - Control Panel.
3. Double-click the **Phone and Modem Options** or **Telephony** icon. You may need to enter your area code before proceeding.
4. If the window has multiple tabs at the top, click the **Advanced** or **Telephony Drivers** tab.



5. Select TAPI Service Provider: 7200/7300 series, then click the **Configure...** button.
The "TCS Config" window will appear.

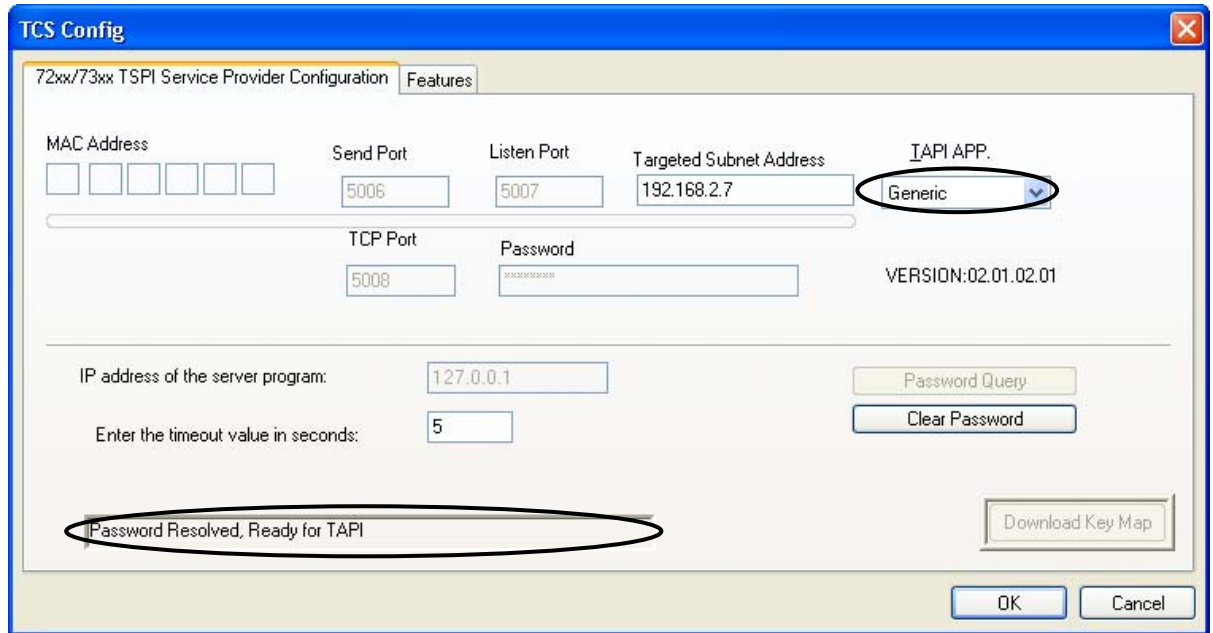


6. Change the Targeted Subnet Address to the subnet (*not* the subnet mask) of the phone; for example, 192.168.2.7.

7. Click the **Password Query** button in the TCS Config dialog to request a password from the phone.

The message area in the dialog will indicate that a valid password was received.

NOTE – If the phone is reset (**Setup** → INSTL → **More** → RESET), the password stored in the PC will no longer be valid. Click **Clear Password**, then repeat the password query.

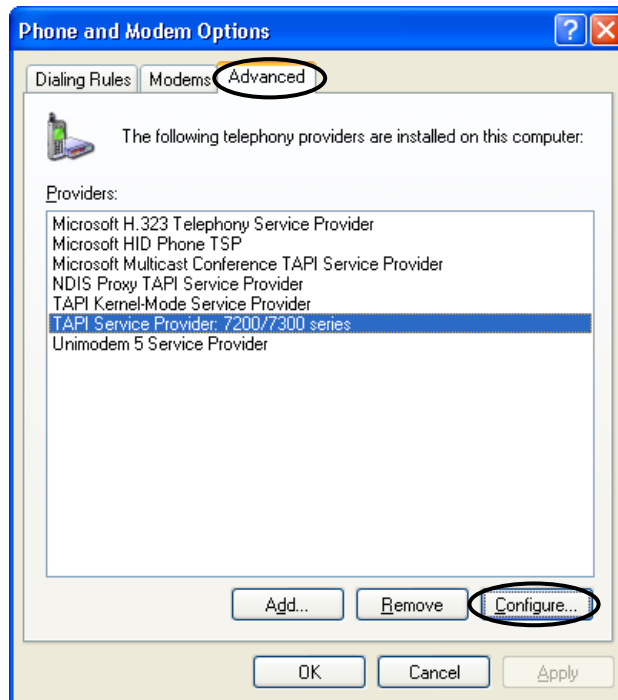


8. In the TAPI APP drop-down list, select Client Care if you are using the Lucent Client Care application, otherwise select Generic.
9. Click the **OK** button.
10. Close the **Phone and Modem Options** or **Telephony** Control Panel.
11. 7310/7320: Press the **Setup** key to exit the TAPI password option.
7210/7220: Reconnect the phone to the network.

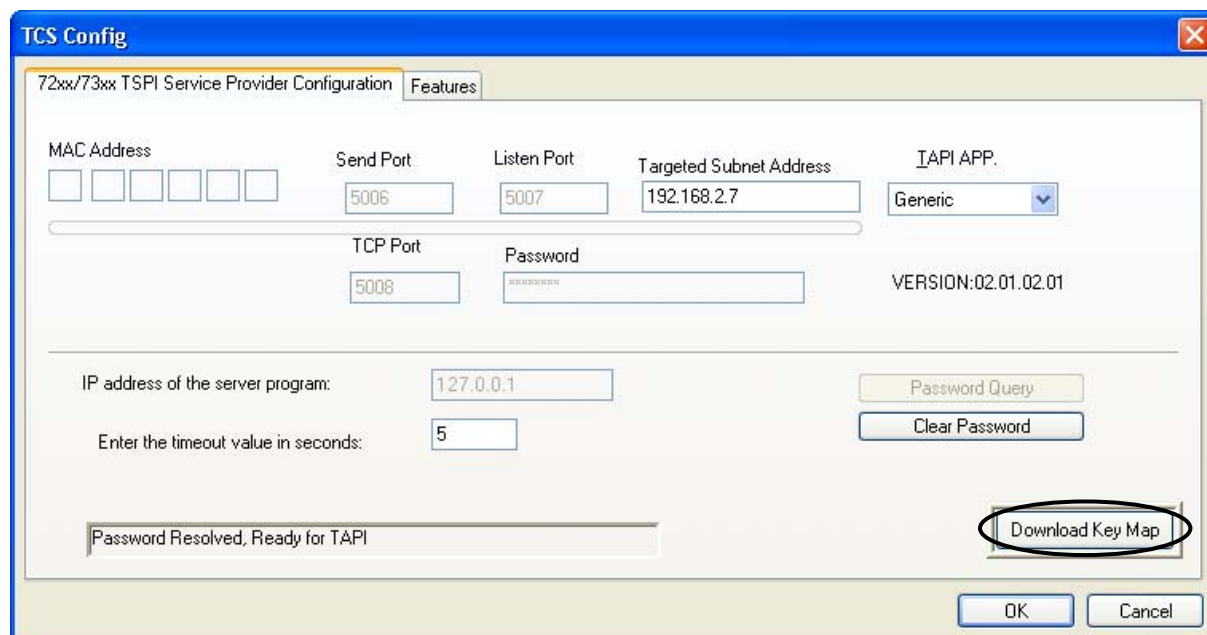
Feature Activator Configuration

Repeat these steps whenever the phone's feature activators have changed.

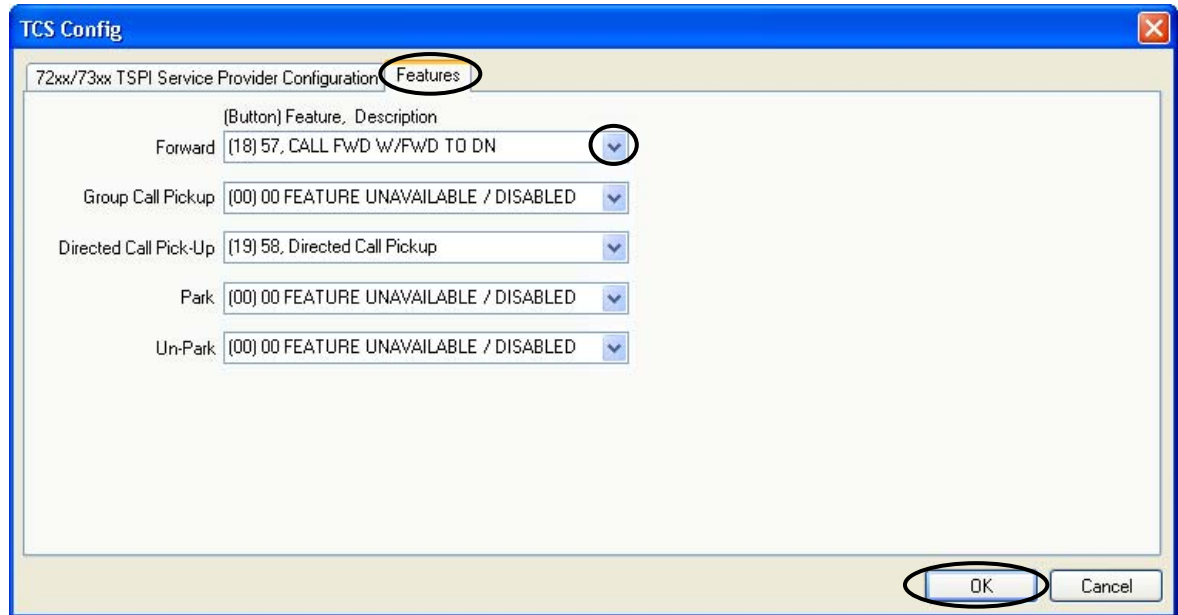
1. Open your TAPI application.
2. From the Start Menu, select **Settings - Control Panel**, then double-click the **Phone and Modem Options** or **Telephony** icon. The control panel may also be accessible from your TAPI application.
3. If the window has multiple tabs at the top, click the **Advanced** or **Telephony Drivers** tab.
4. Select TAPI Service Provider: 7200/7300 series, then click the **Configure...** button.



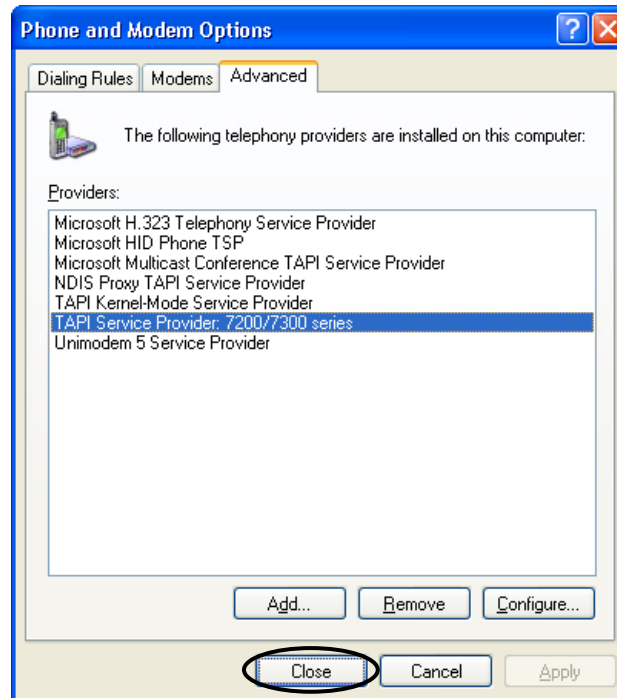
5. Click the **Download Key Map** button to send the phone's key mapping to the PC.



6. Click the **Features** tab.



7. The drop-down lists will contain all Feature Activators currently loaded in the phone. Select the appropriate Feature Activator for each of the listed features.
8. Click the **OK** button.
9. Close the **Phone and Modem Options** or **Telephony Control Panel**.



Support

If you experience any difficulties using the TSPI driver, please contact Tone Commander Customer Technical Support for assistance.

Tone Commander
Technical Support Department
11609 49th Place West
Mukilteo, WA 98275-4255 USA

Phone: (425) 349-1000
(800) 524-0024

Fax: (425) 349-1010

E-mail: tech@tonecommander.com

Web: www.tonecommander.com

Tone Commander is committed to meeting the product needs of our customers. Please write or call us with any suggestions for improvement.