



The Next Generation
Network Solution.

ISDN Voice Service Over Your LAN.

Now you can access the sophisticated voice services of ISDN (Integrated Services Digital Network) over your existing Wide and Local Area Networks. Tone Commander 7310 and 7320 VoIP telephones use Voice over Internet Protocol to provide high quality ISDN Centrex service through the Lucent iMerge™ Centrex Feature Gateway.

These 10 and 20 button phones are expandable to 40 or 50 buttons with the addition of a 6030X Button Expansion Module and have a built-in 10/100BaseT switch to allow daisy-chain connection of a PC workstation without additional equipment. Power can be supplied from a powered switch or midspan power source over the Ethernet connection, or from a local plug-in transformer.

SIMPLE INSTALLATION.

The 7310 and 7320 support DHCP, automatic switch detection, Auto-SPID and Parameter Downloading for true Plug & Play operation. These telephones are quick to install because they automatically configure themselves to your service. The reversible base and tilt display allow convenient desktop or wall mount installation. A free Windows-based Setup Wizard is available to simplify planning and ordering of your ISDN service and print labels for the phones.

EASY ACCESS TO ADVANCED ISDN FEATURES.

Tone Commander VoIP phones have intuitive user menus, making the phones easy to setup and use. You'll enjoy sophisticated electronic key system features of ISDN service using your existing Ethernet LAN/WAN infrastructure. Built-in TAPI support over the LAN allows Caller ID screen pops and remote-control phone dialing from your Windows applications.

Our products are designed to provide uniform operation with all ISDN switch types, eliminating the need for special user instruction or cross training programs.

7320
20 Line
VoIP Telephone



6030X
30 Line
Expansion
Module

NEVER OBSOLETE.

The phones utilize the latest flash memory technology, making it easy to install new features and enhancements over the IP network without ever removing the phone from service. With Tone Commander products and IP technology, your telephone system is always up to date; with VoIP Centrex service, you'll never have to worry about outgrowing your phone system.



7310
10 Line
VoIP Telephone

MORE THAN JUST PHONES.

Tone Commander makes a complete family of VoIP and ISDN telephones, attendant consoles, and NT1 network terminations to fit any application, from a single telecommuter to large Centrex installations. We have been making products to meet the stringent requirements of telephone companies for over 30 years. Our products are designed and manufactured in the USA.

7310 / 7320 Features

Plug & Play Installation

DHCP, Automatic switch type detection, automated SPID entry, and National ISDN parameter downloading are supported for simplified Plug & Play installation. The user can manually enter setup parameters if network parameter downloading is not available.

Works with All ISDN Versions

Each model supports all versions of National ISDN and Lucent 5ESS Custom ISDN without firmware or hardware modifications. Compatible with Lucent 5ESS, Nortel DMS-100, Siemens EWSD, and AG Communication Systems GTD-5 networks with Lucent iMerge™ Centrex Feature Gateway. User operation is the same on all network platforms.

Built-in 10/100BaseT Switch

Provides easy connection of a local PC workstation to a single Ethernet segment that is shared with the phone.

Integrated Full-Duplex Speakerphone

All models include a built-in full-duplex speakerphone with volume controls and a microphone Mute key. The speakerphone allows two-way hands-free conversation and on-hook dialing.

Call Identification

The call display indicates call state, caller ID information and elapsed time during calls. The identity of any call can be previewed at any time (even while on another call) to identify a call before it is answered or retrieved from hold.

Message Waiting Indication

A dedicated, easy-to-see message waiting lamp when you have new voicemail messages.

Multi-function Keys and 30-Button Expansion Module

Ten (7310) or twenty (7320) keys with indicators can be assigned for call appearances, feature activation, or one-touch speed dialing. Feature keys can be remapped to match any network configuration. Local and remote status is clearly indicated on highly visible multicolor LEDs. The optional 6030X Button Expansion Module adds 30 multifunction keys to a 7310 or 7320 for secretarial answering applications.

Special Function Keys

Dedicated keys are provided for Conference, Transfer, Drop, Hold, Speakerphone, Mute, and Volume functions. Four dedicated menu control keys and four softkeys are provided to conveniently navigate display-oriented menus and select context-based options.

Call Log

A call log maintains a running list of the last 100 answered, unanswered, and outbound calls, with the caller ID, called line ID, time, date, and duration of each call. Softkey autodialing allows easy callbacks. Entry into the call log may be password protected.

Call Preference Options

You can specify whether a ringing or idle line appearance is automatically selected when the handset is taken off-hook or the speakerphone is activated.

Support for Computer Telephony Applications

Remote control of the phone is provided over your LAN for Caller ID screen pops and phone dialing from Windows TAPI applications. A screen pop add-in for Microsoft Outlook is available on our Web site.

LDAP Corporate Directory Access

Lightweight Directory Access Protocol (LDAP) directory lookups can provide access to a centralized corporate directory on the network for speed dialing.

Call Directory

A built-in 36-entry softkey-based speed dialing directory stores frequently dialed names and numbers.

Speed Dial

Spare keys can be programmed with up to 24 digits for quick one-key dialing. Network feature activators and "smart" pauses can be used for easy access to voice mail, directed call pickups and call forwarding.

Direct Station Selection

Call appearance keys can be programmed to show busy line status on shared call appearances and provide one-key direct station selection for secretarial answering. No special network setup is required for this feature.

Voice Announce

Provides hands-free voice announcing of screened calls or station-level paging when the phone is on-hook.

Flexible Ringing Options

One of eight distinct ringing tones can be selected for each phone or for individual call appearances. Distinctive ringing cadences based upon network alerting patterns are supported. When off hook, ringing is muted, with selectable continuous or single burst ringing.

Ringling Control for Shared Lines

Shared call appearances can be individually programmed on the phone for normal ringing, delayed ringing, or no ringing for workgroup environments. No special network setup is required for this feature.

Headset Operation

When a headset is used, hook switch operation can be disabled. Transmit and receive characteristics can be customized to match any headset.

Date and Time Display

Time and date are displayed when the phone is idle. A call timer shows the elapsed time for calls in progress.

Desktop or Wall Mounting

A reversible base allows easy wall mounting without an adapter kit. The tilt display provides optimal viewing for any application.

Local Inspect

Call appearances, network feature keys, and directory numbers can be inspected to verify the phone configuration after a network parameter download or user setup.

Advanced Troubleshooting Capabilities

Built-in Q.931 network protocol monitoring and analysis over the network provide sophisticated tools to pinpoint network problems.

Easy Firmware Updates

Software can be easily updated to the latest version via TFTP download on the IP network. Firmware is automatically checked for the latest version at initial power-up and once a day.

Specifications & Ordering Information

Call Appearance Capacities

7310:	10 call appearances
7320:	20 call appearances
6030X:	30 call appearances

Cabling

Category 5, 2 pairs (Ethernet), 2 pairs (optional power)
8 position modular jack

Standards Compliance

ITU Standard H.323 v2
ITU Standard H.225 v2
ITU Standard H.235
ITU Standard H.245 v3
National ISDN, Lucent 5ESS Custom ISDN
FCC Part 15
Hearing Aid Compatible
FCC Part 68 Volume Control Requirements
TIA/EIA-810-A
UL, cUL Listed

Power Requirements

37 to 57 VDC @ 3.5 W idle, 5 W max. (excluding wiring losses)
Compatible with IEEE 802.3af Power over Ethernet

Physical Dimensions

7310, 7320:	8.25" W x 8.5" D x 4.75" H, including handset
6030X:	3.6" W x 8.5" D x 4.75" H

Weight

7310, 7320:	2.5 lbs.
6030X:	0.6 lbs.

Colors

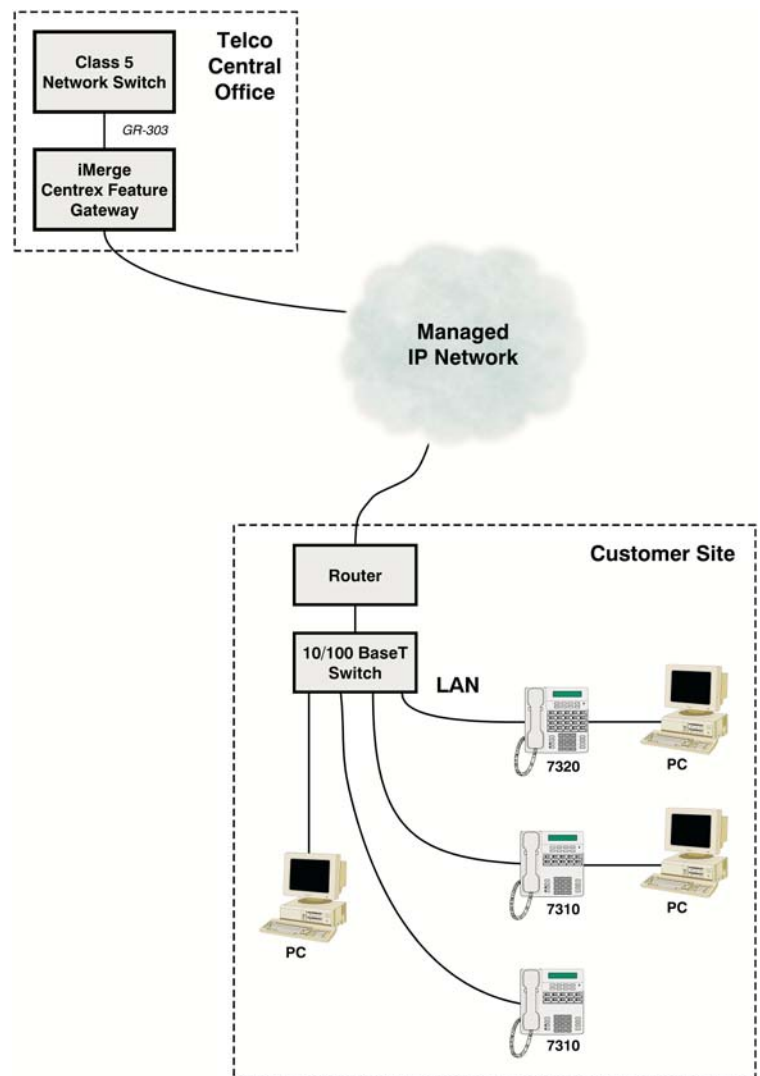
Black, Off-White

Environmental

Operating temperature: 32° to 104° F (0° to 40°C)
Storage temperature: 32° to 122° F (0° to 50°C)
Humidity: 5% to 95% non-condensing

Made in USA

Typical Installation



Ordering Information

Model #	Description
7310-B	10 Line VoIP Telephone, Black.
7310-W	10 Line VoIP Telephone, White.
7320-B	20 Line VoIP Telephone, Black.
7320-W	20 Line VoIP Telephone, White.
6030X-B	30 Button Expansion Module, Black.
6030X-W	30 Button Expansion Module, White.
901034	Standalone Power Supply for 7310 and 7320.

iMerge is a trademark of Lucent Technologies.

**tone
commander**

Tone Commander Systems, Inc.
11609 49th Place West
Mukilteo, WA 98275-4255
(800) 524-0024, (425) 349-1000, Fax (425) 349-1010
www.tonecommander.com